

Cascadia™

Creating Remote Possibilities®

HD-SDI DVR / Analog (960H) DVR

Quick Guide

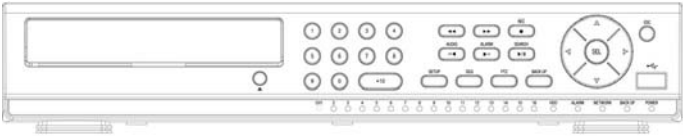






HD-SDI DVR Models: HDH4, HDH8, HDH16,
HDR4, HDR8, HDR16



Analog (960H) DVR Models: HR4, HR8, HR16

PRODUCT COMPONENTS

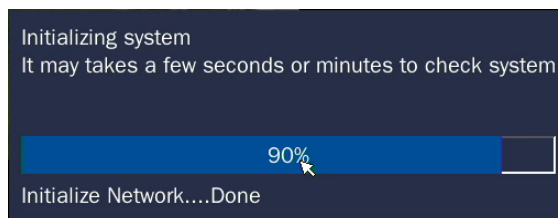
DVR		
Client DVD & Quick Guide (Includes Detailed User Manual)		
Remote Control & Mouse		
Power Supply & AC Power Cord	 [HR4, HR8, HR16]	 [HDR4, HDR8, HDR16]

INITIAL SYSTEM BOOTUP PREPARATION

Turning on the DVR

- Connect the camera BNC cables.
- Connect network and monitor cables.
- Plug the USB mouse to the USB port on the DVR.
- Connect a microphone and speaker if applicable.
- Connect the power cable to the DVR from an 110V wall outlet.
- After initialization, enter the correct date and time.
- Adjust the video output resolution to the optimal resolution setting of your monitor.
- Video output resolution can be changed from Setup > Display > Video Output.
- Default video output resolution is set at 1024x768 with exception to HDR4, HDR8, and HDR16 which have a default video output resolution set to 1280x720.

IMPORTANT: Set monitor to highest possible video output resolution to prevent overscan.



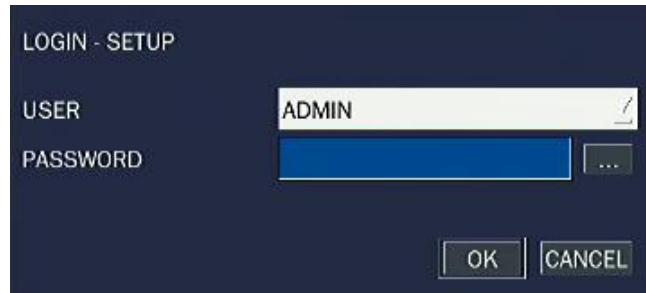
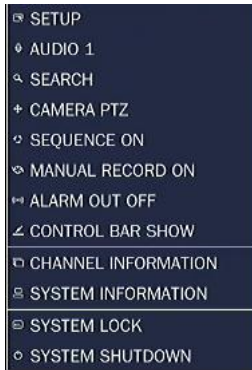
MAIN MENU

Login Information

Default Username: **ADMIN**

Default Password: **1111**

- To enter the main menu, right-click the screen and select setup from the submenu or press the setup button on the remote control.



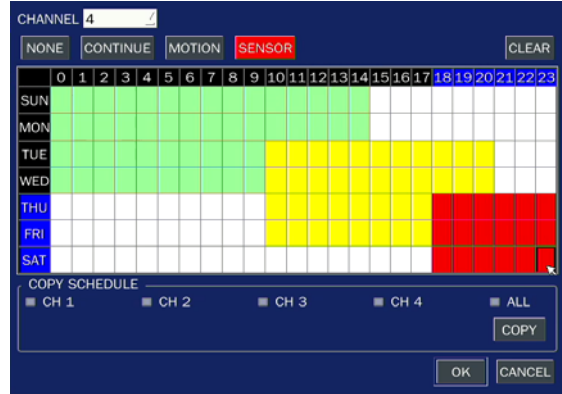
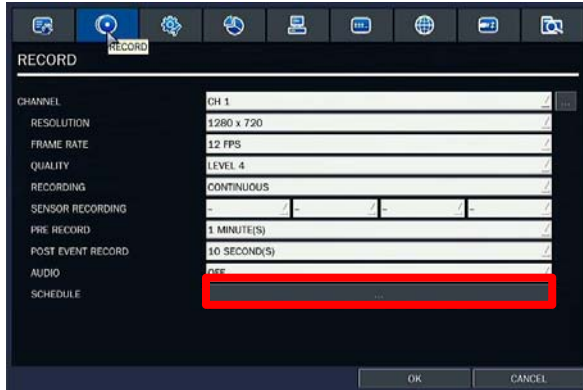
- Enter the username and password.
- It is strongly recommended to change the password to prevent unauthorized access.

Menu	Description
SETUP	Select this menu option to go to the setup menu.
AUDIO	Select this menu option to set an audio channel.
SEARCH	Select this menu option to enter the search mode.
CAMERA PTZ	Select this menu option to open PTZ control OSD menu.
SEQUENCE	Select this menu option to enable/disable channel sequence.
MANUAL RECORD	Select this menu option to enable/disable manual recording. *Note: MANUAL RECORD will override any recording setting and record CONTINUOUSLY.
ALARM OUT	Select this menu option to enable/disable the alarm functions.
CONTROL BAR	Select this menu option to hide/display the menu control bar.
CHANNEL INFORMATION	Select this menu option to display channel-related information.
SYSTEM INFORMATION	Select this menu option to display DVR system information.
SYSTEM LOCK	Select this menu option to lock/unlock the DVR control inputs.
SYSTEM SHUTDOWN	Select this menu option to safely shut down the DVR.

RECORDING MODE SETUP

All DVR models are preconfigured to record **CONTINUOUSLY**.

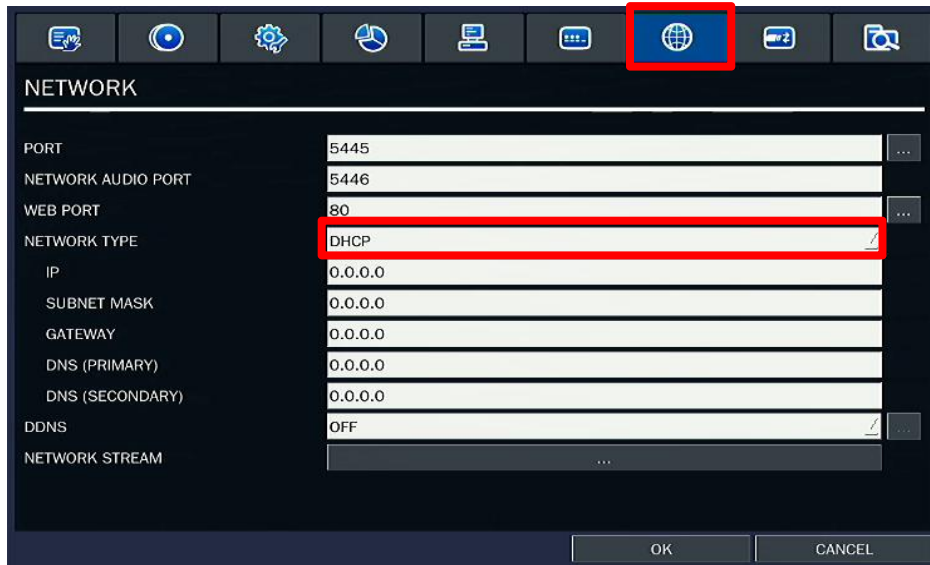
- To setup a different recording schedule, select Schedule in the Record menu. Navigate through the items using the mouse or the remote control.



- Select CHANNEL, select CONTINUOUS, MOTION, or SENSOR, and select desired Date & Time.
- To copy a schedule to a different channel, select the channel from the COPY menu.

NETWORK SETUP

Network IP address must be configured on the DVR before remote connection can occur.



- To setup an IP address, select DHCP or STATIC on Network Type in the Network menu.
- If **DHCP** is selected, the DVR will automatically retrieve an IP address from a router, provided that the router has DHCP enabled.
- If **STATIC** is selected, all IP information (IP, SUBNET MASK, GATEWAY, DNS addresses) must be manually configured.

NETWORK SETUP (Continued)

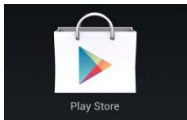
- Free DDNS service for Dynamic IP users is provided. Please follow these instructions if your public IP address is a dynamic IP address:
 - Turn on DDNS and select **SERVER1** from the DDNS.
 - Select **ddnscenter.com** from DDNS SERVER NAME.
 - Select desired time interval from DDNS INTERVAL.
 - Go to www.ddnscenter.com from a PC.
 - Enter the DVR's **MAC address** and **Serial number**.
 - Create a preferred **Domain Name** and click on **Duplication Check**.
 - *Note: Special characters and spaces cannot be included in Domain Name.**
 - Confirm a desired Domain Name is available and click on the Register button.
(e.g. **yourowndomainname**.ddnscenter.com)

Instruction for the DVR installed under firewall / gateway / router / modem-router combo LAN:



- If your DVR is on LAN (using a private IP Address), the **Default Port Number “2100” is for Analog DVR’s; “2200” is for Megapixel DVR’s**. Additionally, the **WEB PORT** (Default is “80”) must be open and forwarded to the IP address of the DVR.
- Please refer to the firewall / gateway / router user manual or consult with your IT department.

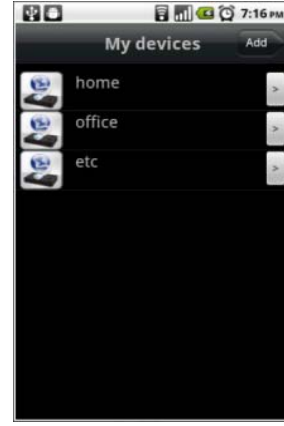
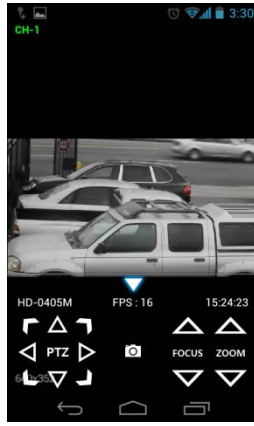
NETWORK ACCESS via MOBILE PHONE

Free iPhone / iPad and Android OS Phones application is provided:



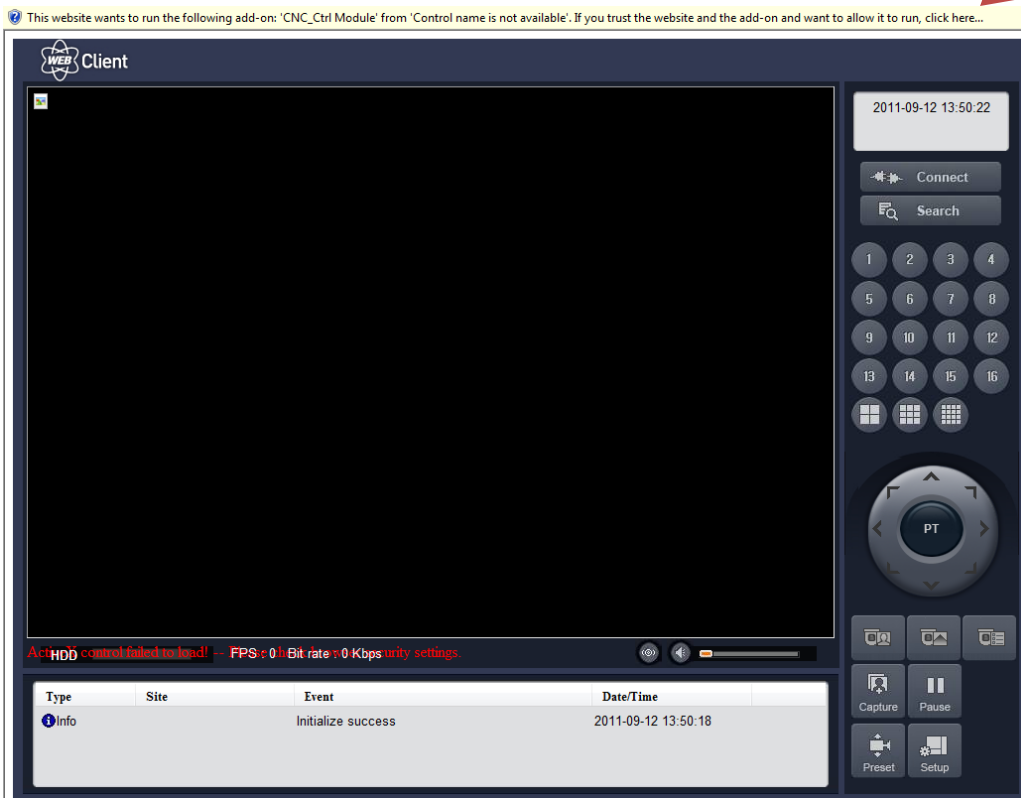
- Go to the iPhone App Store or Google Play Store.
- Search for “iUMS” and install the application on your phone.

- **Apple iPhone / iPad:** Tap  icon for SITE ADDITION. In SITE INFORMATION, enter the following information: SITE, IP/DNS, PORT, ID, and PASSWORD. Tap SAVE to save the SITE.
- **Android Phone:** Tap  icon for SITE ADDITION. In the SITE INFORMATION, enter the following information: SITE, IP/URL, PORT, ID, and PASSWORD. Tap ADD to save the SITE.
- **NOTE:** Video on mobile phone can be viewed in highest resolution.

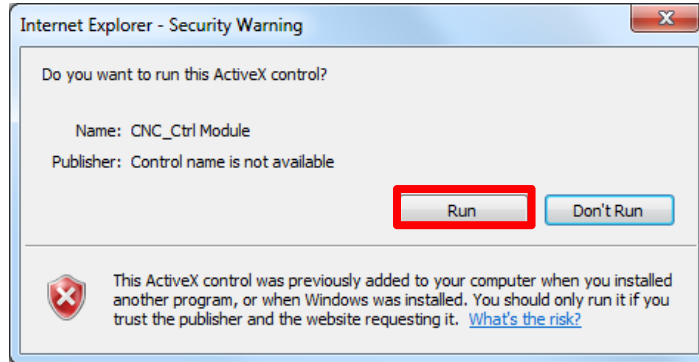




NETWORK ACCESS via WEB BROWSER

- A Web Browser connection uses the Web Port (Default is “80”). Please be sure to open and forward the Web Port to the DVR’s IP address.
- Be sure Internet Explorer has “Pop-ups” enabled.
- Open Internet Explorer and enter the IP address or the domain name of the DVR to open the Web Client.



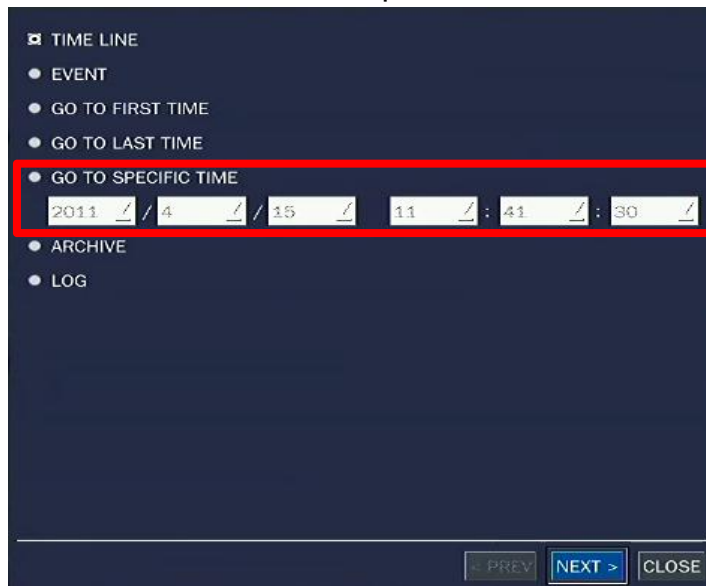
- Install the ActiveX when prompted.



- Ensure the message '**Initialize Success**' appears on the bottom information bar.
- Click on the  button to open Login window.
- Enter the DVR Port, DVR ID, and the DVR Password.
- Click on the Connect button.
- Click on the  button to switch to the playback mode.

How to make a backup

- Insert a USB flash drive in the USB port on the DVR.
- Right-click the main screen and click Search to open the Search menu.



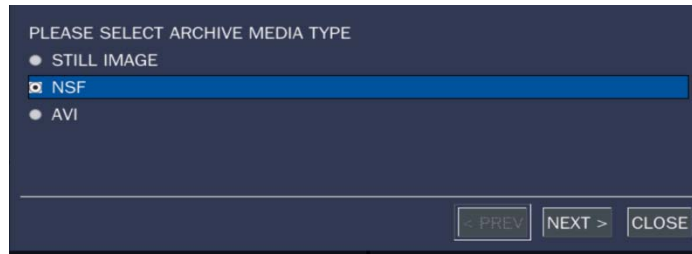
- Click on GO TO SPECIFIC TIME and enter the specific date and time.



- Move the mouse pointer to the bottom of the screen and the Search bar will appear.



- Click on the Backup button  to open the Backup window.



- Select STILL IMAGE, NSF, or AVI format.
- For less than an hour of recording, select a USB stick. For over an hour of recording, select “Use HDD.”
- Select the specific channel number.
- Enter the specific Backup duration.

Information

Design, function, and specifications are subject to change without notice.

iPhone® and iPad® are registered trademarks of Apple Inc.

Android™ is a trademark of Google Inc.

Special characters and spaces cannot be included in the Domain Name.

Google Chrome, Opera, Mozilla Firefox, and Safari are not compatible.

DVR Network Information Table	
DVR IP	
DVR Subnet Mask	
DVR Gateway	
DVR DNS (Primary)	
DVR DNS (Secondary)	
Network Port	
Web Port	
Domain Name (if applicable)	.ddnscenter.com
Public IP (if applicable)	