

Cascadia™

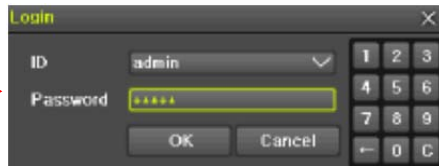
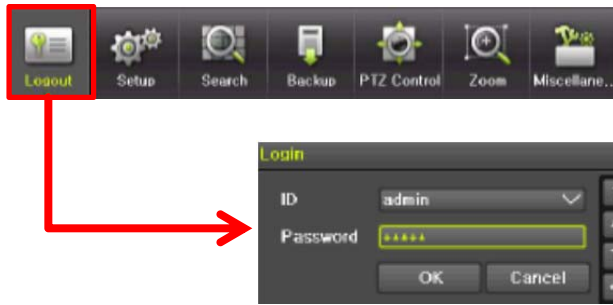
Creating Remote Possibilities®

HD-SDI Professional DVR Quick Guide



1. System Login

1.1 User Login



Default Admin Password: 00000

1.2 Time Setting and HDD Format



Navigate to **{Menu}→{Setup}→{Time}** and set the time/date to the appropriate setting for the time zone.



Before the DVR can be used properly, a new HDD must be formatted. Navigate to **{Menu}→{Setup}→{Storage}**, select the HDD, and set it to “Recording-Init.”

1.3 Setup

Setup is designed to help users easily configure recording resolution, speed, mode, and quality. Navigate to **{Menu}→{Setup}→{Recording}→{Recording}**. For further details, please refer to User Manual included on CD provided with DVR.

2. System Operation







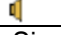
2.1 Using Tool (Control) Bar



1	Full Screen
2	4 Channel Screen Division
3	9 Channel Screen Division
4	16 Channel Screen Division
5	Zoom Function
6	Auto Sequence Mode
7	Date/Time
8	HDD Status
9	Go to Playback

2.2 Display Mode

The user can select Display mode with the tool bar or pop-up menu. The images can be seen at real-time speed with 1, 4, 6, and 9 split screen divisions.

※ Recording Event Icons ※	
	Motion Detection
	Sensor Detection
	Audio Detection
	Text Detection
※ Live Screen Icons ※	
	Video is not connected.
	Audio is enabled.
	Audio is muted.
No Signal	Camera has been disconnected.

2.3 Using Main Menu

Right-click with the mouse or pressing **[Menu]** on front panel to open the Menu window.



Setup: Configure Time / Camera / Recording / Schedule / Storage / Network / System

Search: Search recorded images

Backup: Backup recorded files

PTZ Control: Control PTZ Camera

Zoom: Control Zoom

Miscellaneous: DVR Info / Log Viewer / Misc Control / Display Setting / System Shutdown

2.4 Search Mode

The user can click the Search icon on the Menu Bar to search the recorded images by selecting date & time on the calendar. The user can click the Playback icon to play them back.



2.5 Backup Mode

Click the Backup icon on the Menu bar to easily archive video images. The Backup window will then appear. Select the backup media (e.g. CD/DVD or USB drive) and select time and channel to be recorded. Finally execute the archiving to complete the process.



3. Network Setting

3.1 Public/Static IP

Navigate to {Menu}→{Setup}→{Network}→{Ethernet}, check TCP/IP, and input IP Address, Subnet Mask, and Default Gateway (IP address is assigned by ISP).

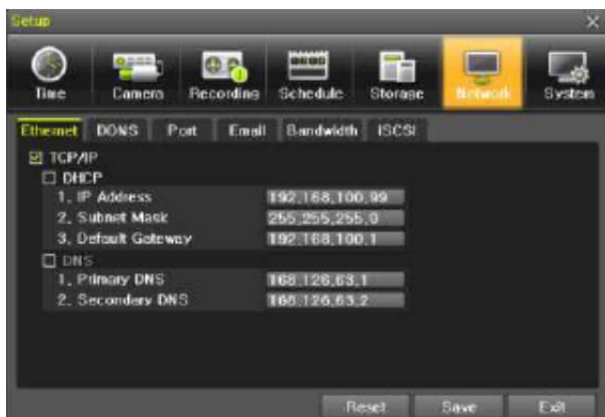
3.2 Public/Dynamic IP without IP Router

Navigate to {Menu}→{Setup}→{Network}→{Ethernet} and check DHCP. Next, navigate to {Menu}→{Setup}→{Network}→{DDNS} and select “DDNS On.”

3.3 Public/Dynamic IP with IP Router

3.3.1 DVR IP Setting

Navigate to {Menu}→{Setup}→{Network}→{Ethernet} and check TCP/IP and input IP Address, Subnet Mask, and Default Gateway (Router IP address: 192.168.0.#, DVR IP address: 25)



3.3.2 Router Setting

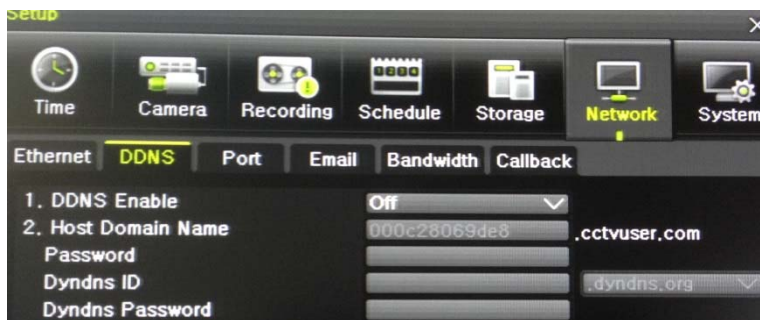
Input a router IP address (192.168.0.1) and go to the router setting. There are 2 ways to set up “port forwarding”:

- 1) DMZ: Enable DMZ and input the DVR IP address 192.168.0.25
- 2) Port Forwarding: Set up 2000

All routers are different. To port-forward your router, please refer to your router’s user manual.

3.3.3 DDNS Setting

Navigate to {Menu}→{Setup}→{Network}→{DDNS}, select “DDNS On,” and input Host Domain Name (DDNS from IP router can also be applied).



Example Domain Name:

000c28020f3f.lorexddns.net → goodvr.cctvuser.com

4. RMS (Remote Monitoring Software)

RMS (Remote Monitoring Software) is a centralized management solution that enables user to control the entire system over the network. It can utilize a variety of functions including System Monitoring, Remote Playback, and System Setup Configuration.

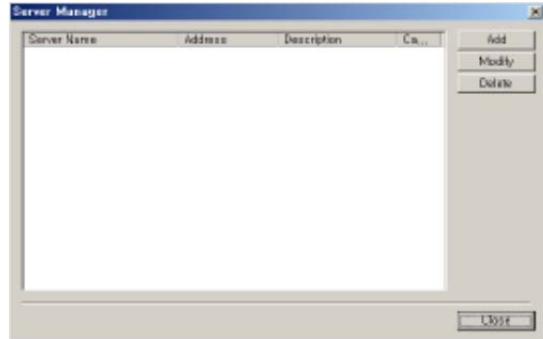
4.1 Program Start

In the program start menu, navigate to RMS Menu and select RMS icon; or double-click RMS icon on the desktop. The software will open immediately, but functionality will be limited until a site is registered.

4.2 Site Registration

- 1) Select  button, then select ‘Server Manager.’ A new window will appear.

2) In Server Manager, the users can add, modify, and delete servers.



3) Click [Add] and fill in the necessary information.

Item	Description
Name	Name of the DVR to be used in the program
Description	Description of the DVR
Connect Address	Network address of the DVR
Port	Network port no. of the DVR
Camera Count	The number of cameras connected to the DVR
User Name	User name registered in the DVR
Password	Password registered in the DVR

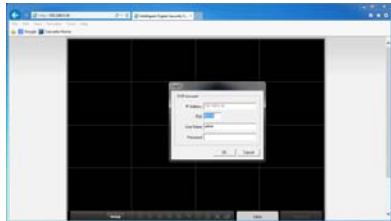
4) Click [Modify] to edit server information.

5) Click [Delete] to discard server information.



5. Web Viewer

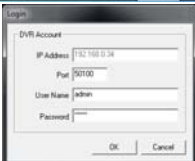
The System is equipped with a built-in web server. Therefore user can be connected to the system via Internet Explorer for live monitoring, playback, and remote setup configuration.



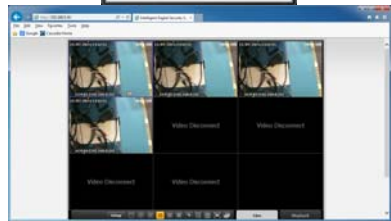
[Setting in Internet Explorer]

1) Input IP address or Domain name

2) After downloading Active-X file, login dialog box will appear. Enter address, port, user ID, and password.



	Port	:
	User Name:	admin
	Password	: 00000



[Live & Playback]

1) Click [Live] or [Playback] buttons on bottom of window

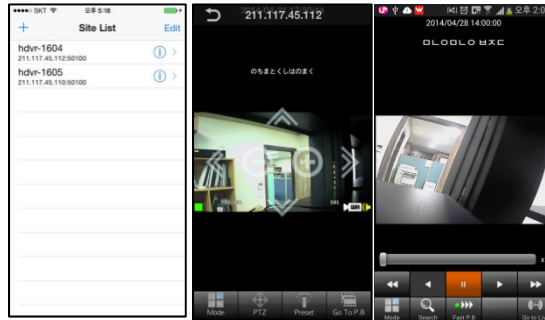
2) Double-click channel screen or select [Channel mode]

3) Click [Trick mode] button in Playback

6. CCTV Smart Viewer (Smartphone Mobile Viewer)

CCTV Smart Viewer is mobile viewer software that allows a user to view video images from the DVR on his or her smartphone. By installing the corresponding CCTV Smart Viewer software on the smartphone, users can view up to 16 channels live video/audio, PTZ control, PTZ zoom in/out via WAP, Wi-Fi, etc.

Smartphone software for iPhone and Android can be found at the Apple “App Store” and Google “Play Store,” hence users can download the software at the respective application stores.



Refer to the [User Manual] for full functional explanation of Front Panel, Rear Panel, and IR Remote Controller.



Caution

Specs and functions are subject to change without notice. Some functions may not be available depending on the model.
