

Cascadia™

Creating Remote Possibilities®

HD-SDI Professional DVR RMS Manual



1. Introduction

This program can manage and control several DVRs from a remote site through the network at the same time. This program provides live image monitoring, playback, and DVR configuration.

This program supports simultaneous view of up to 16 channels of live video. Its supported functions are:

- Two-Way Audio
- Relay Control
- PTZ Control
- Preset Configuration and Movement
- Focus Control of Cameras
- DVR Configuration
- Remote Playback

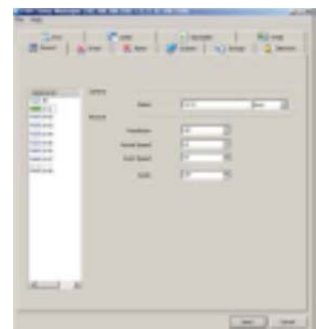
Remote Playback will handle one system at a time; it provides forward, backward, fast play mode, and frame-by-frame mode.



LIVE



PLAYBACK



Remote Configuration

2. Installation

2.1 System Requirements

These are the *minimum* specification requirements for the PC to run the RMS software properly:

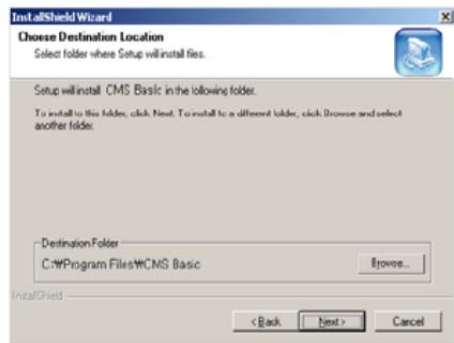
CPU	Intel Core 2 Duo 2.0 GHz
Memory	2GB
VGA Memory	128MB
VGA Display	1024 x 768 (with 32bit color)
HDD	80GB
OS	Windows XP SP2
DirectX	9.0

2.2 How to Install

1. Insert provided CD/DVD-ROM containing the installation file
2. Run 'Setup.exe' for the RMS
3. Select a language



4. Select a desired installation folder for the program or keep it at default




5. Click 'Next' to complete the installation process

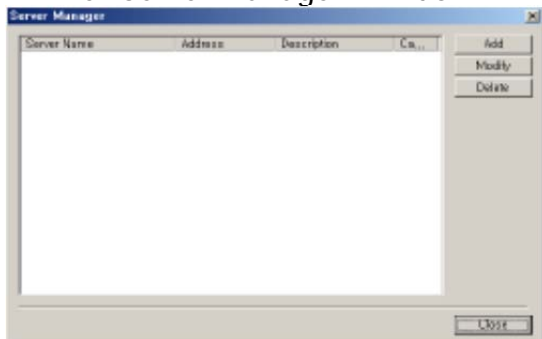
3. How to Operate

3.1 Register Site

After starting up the software, the user must register DVRs to be controlled from the RMS.

3.1.1 How to register devices

1. Select  button, then select 'Server Manager'
2. The "Server Manager" window will then appear



3. The user can add, modify, and delete servers
4. Press [Add] button

5. Input the proper information



Server Name: Site name for the DVR

Description: Notes or information concerning the site

Connection Address: IP address of the DVR

Port: Port number for remote connection

Camera Count: Number of cameras for site

User Name: User ID required for remote connection to the DVR

Password: Password required for remote connection to the DVR

6. Press [Modify] to edit site information


7. Press [Delete] to discard site information

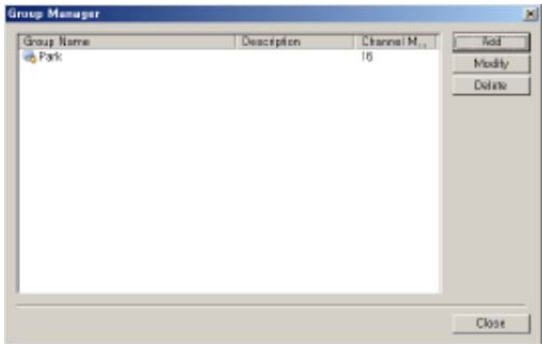


3.2 Register Group

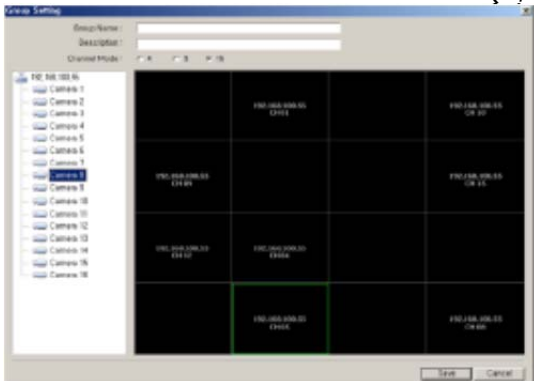
A Group function allows the user to select several cameras from different DVRs and assign them to one screen. A group can contain a maximum of 16 different cameras.

3.2.1 How to register group

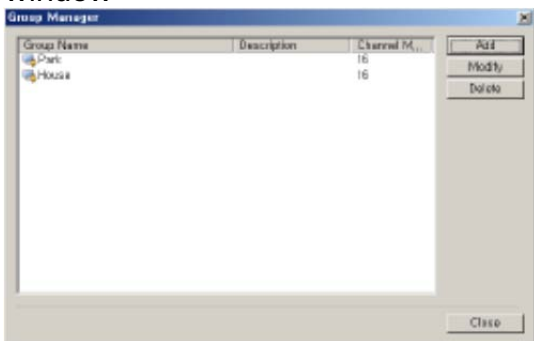
1. Select  button, then select 'Group Manager'
2. The "Group Manager" window will then appear

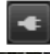


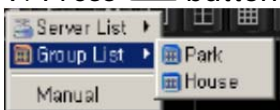
3. Press [Add] button
4. Input Group name and description
5. Select screen mode to be used (4, 9, or 16 screen divisions)



6. Drag and drop cameras from the list on the left to panel positions on the right
7. Press [Save] when done positioning cameras
8. The user can modify and delete registered groups via the Group Manager window




9. Press  button to select a group from the list

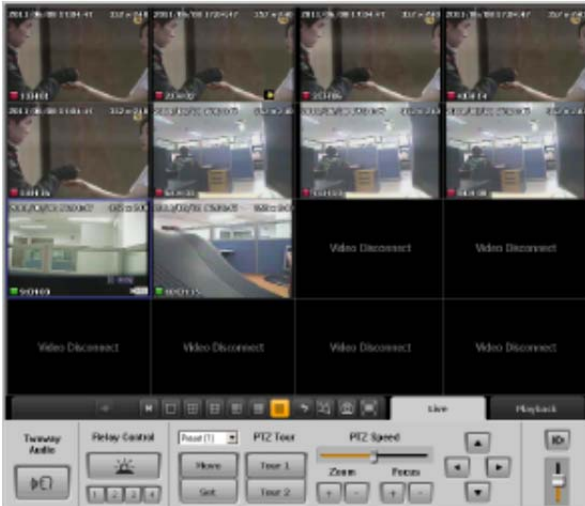



3.3 Connect Device

The user can connect devices one-by-one or Group devices. A maximum of 16 DVRs can be connected simultaneously.


3.3.1 Connect from the server list

1. Press  button and select [Server List]
2. Select a DVR from the list to connect
3. Live images will then be displayed




4. Press  button to close a connection


3.3.2 Connect from the group list

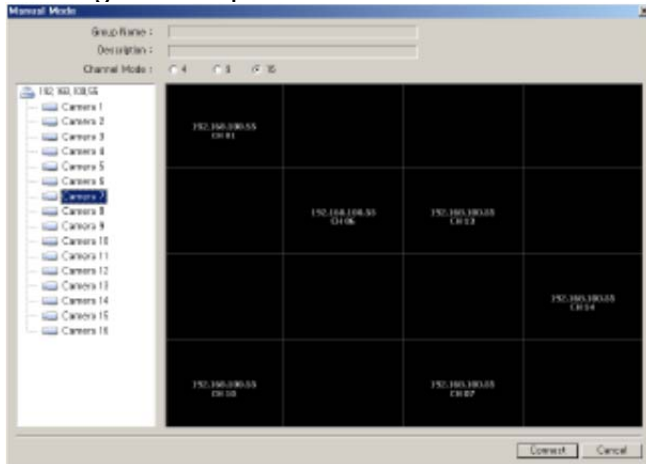
1. Press  button and select [Group List]
2. Select a Group from the list to connect
3. Live images will then be displayed




4. Press  button to close a connection

3.3.3 Connect devices manually

1. Press  button and select [Manual]
2. Select a channel mode between 4, 8, or 16
3. Drag and drop a camera from the device list on the left to a panel on the right



4. Press [Connect] button
 5. Press  button to close a connection
- *Note: Connecting manually will not save the camera positions for later use. If the user wishes to save this screen configuration, register a new group via "Group Manager" window.

4. Live View

4.1 Live View Window

The Live View window will be available after making a connection via [Server List], [Group List], or [Manual]. Users can survey live images and audio via this window.

4.2 Live View Images

The user can change the view mode (1, 4, 6, 9, 12, or 16 screen divisions), camera positions, and utilize Live Zoom.

4.2.1 Live View Mode

Select a view mode from: 

4.2.2 Change Channel Position

1. Drag the channel to be moved with the mouse to desired position then release the mouse button
2. If an existing channel was in the spot where the desired channel was moved, it will swap places with said channel

4.2.3 Live Zoom

1. The user can use digital zoom on a selected camera in full screen mode
2. The Zoom-In ratio can be manipulated between 100% to 1600%

4.3 Live View Functions

Live view supports PTZ control, relay control, and two-way audio.

4.3.1 PTZ Control


PTZ control will be available when the connected camera supports pan, tilt, and zoom functions. Additionally, the user may control focus, presets, and speed of movement, and may utilize the tour function.

PTZ Control


1. Select a channel with a connected PTZ camera
2. Press an arrow on screen to control the movement of the camera




PTZ Focus Control


1. Select a desired channel to change its focus
2. Press  buttons to focus it in and out until the proper focus is achieved

PTZ Zoom Control


1. Select a desired channel to zoom
2. Press  buttons as desired

Preset Control


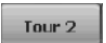
1. Select a desired channel to manage its presets
2. Select a preset button, then press  button
3. The camera will move accordingly

4. Use the PTZ camera control buttons to move it into a desired position, then press  button to update the current preset with the new position

PTZ Speed Control




1. Select a desired channel to change its movement speed
2. Move  slide bar to a desired position and move the camera with the control buttons to test the movement speed until a proper adjustment is made

PTZ Tour Control

1. Select a desired channel to operate the tour function
2. Press either of the  or  buttons to run one of its saved PTZ movement routes

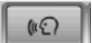
4.3.2 Relay Out Control

Users can control the relay out connected to DVR. The user can activate and deactivate the relay device remotely.

1. Select a site from the device list.
2. Press  button to set action to On/Off
3. Set to display as  (Off) /  (On)
4. Relay control is set to time out in 5 seconds. Therefore, the next command will be activated after 5 seconds.

4.3.3 Two-Way Audio Control


When Two-Way Audio Control is active, audio from the remote PC's mic will be transferred to the DVR's speakers.

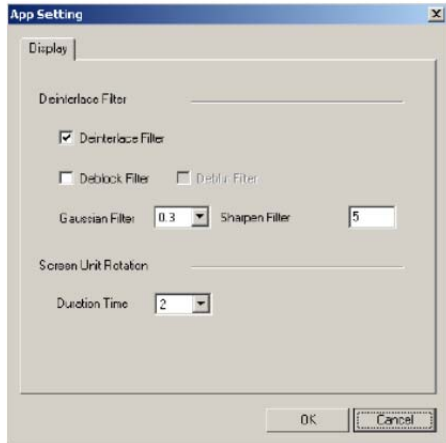
1. Select a site from the device list
2. Press  button and begin speaking into the PC mic
3. The user's voice will then be heard from the speakers on the DVR side
4. Two-Way Audio is set to time out in 120 seconds. Therefore, the next command can be initiated after 120 seconds.

4.4 Basic Functions

4.4.1 App Setting

The user can configure the program by doing the following:

1. Press  button and select [App setting]

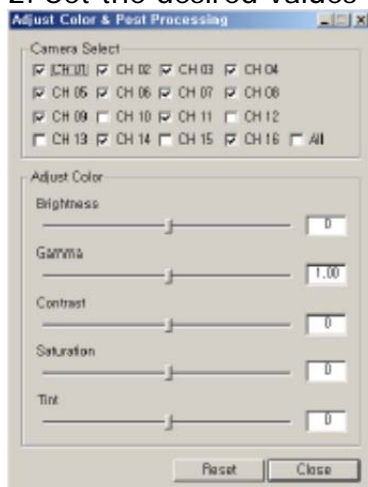


2. Users can apply several Filter modes for images
3. Users can set the duration of image changes during sequence mode

4.4.2 Color Setting

The user may adjust the color of live channels.


1. Press button and select [Color Adjust]
2. Set the desired values in [Adjust Color & Post Processing] window



3. The user can adjust Brightness, Gamma, Contrast, Saturation, and Tint
4. With [All] option checked, all cameras can be adjusted at the same time
5. The color adjustments here cannot be saved. Upon next login, the color values will be reset


4.4.3 Screen Sequence

The screen can cycle in a given sequence with set terms.

1. Select a channel mode (1, 4, 9, or 16 screen divisions)
2. Set a duration time for the sequence in [App setting] window (2~60 seconds)
3. Press  button to begin sequence mode

4.4.4 Live Image Capture


Users can capture live images and print selected images.

1. Press  button to capture screen
2. Select the next action between [Save as...] or [Printing]



3. The image will be saved in the JPEG file format.


4.4.5 Digital Zoom

1. Select a channel and press  button
2. Move the red rectangle to a desired position, then scroll up with the mouse wheel
3. The maximum zoom ratio is 160%



4.4.6 Full Screen

Enabling full screen will expand the live view window to the same size as the PC monitor.












1. Press  button
2. Press ESC to restore the screen to its standard size

5. Playback

5.1 Remote Playback

Recorded data can be retrieved from the DVR on a remote PC through the network.

5.1.1 Control Panel for Playback

Buttons	Description
	Fast reverse playback
	Reverse playback
	Previous frame
	Pause
	Next frame
	Play
	Fast forward
	Move to previous timeline
	Move to next timeline
	Playback Speed Control
	Audio Control

5.1.2 Play from Recorded File


1. Select Playback tab
2. Input the start time for playback
3. Control the playback with the first seven buttons listed above

4. The user can move to the next / previous hours using the eighth and ninth buttons listed above.




- Reverse playback is available only in full screen mode on one channel, playing at 1 frame per second
- A maximum of 16 channels can be played back at the same time

5.1.3 'Go-to' Function

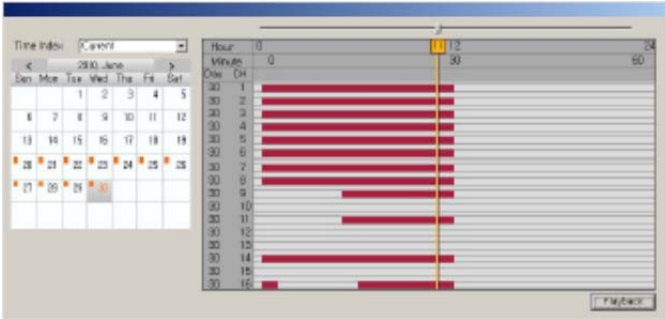
1. Select a date and time
2. Press  button to playback directly from the selected point of time

5.1.4 Searching Recorded Data

1. Press  button on playback screen
2. Select Search in menu
3. The calendar will display a different color on days containing recorded data



4. Select a day from the calendar
5. A table containing recorded data will be displayed on the right
6. Select a timeline to play back

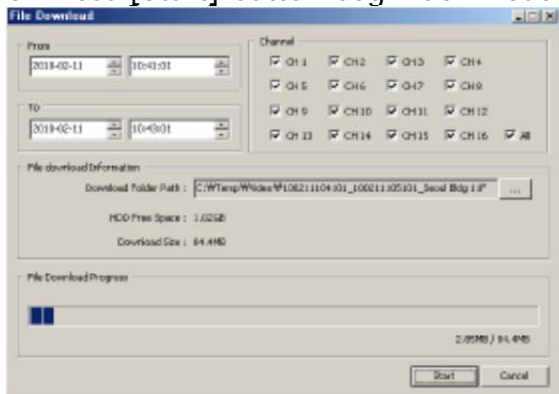


7. To select a minute-based timeline, press [Playback] button again.

5.2 Backup


Recorded images and audio from the DVR can be saved on the remote PC.

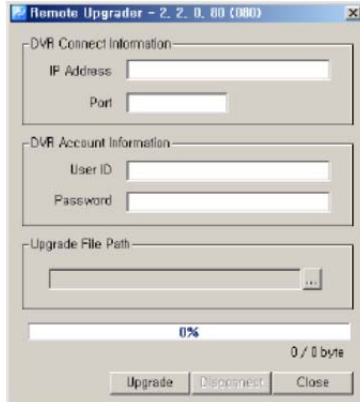
1. Press **M** button, then select [Download]
2. Select start / end date and time
3. Select channels to be backed up
4. Set a path for the backup on the PC
5. Press [Start] button begin downloading data from the DVR



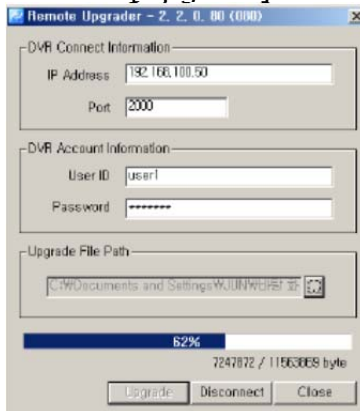
6. Remote Upgrade

This program provides a function to upgrade the DVR with the latest firmware remotely.

1. Press  button and select [Remote Upgrade]
2. The Remote Upgrader window will then appear



3. Input the information from the DVR to be upgraded: IP address, port, user ID, and password
4. Select an upgrade file (.bin file format)
5. Press [Upgrade] button to begin the procedure




6. After the firmware upgrade has been transferred over the network to the DVR, the DVR will begin installing the upgrade automatically.

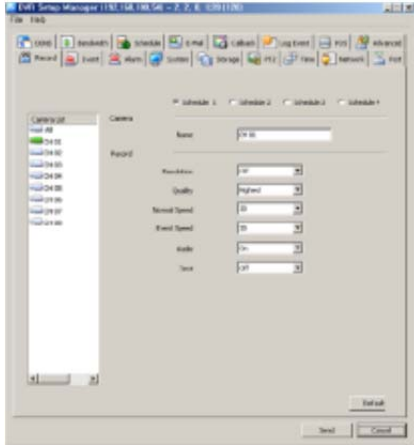
*Note: The DVR must have a HDD installed before an upgrade can be initiated remotely.

7. DVR Setup Manager

DVR Setup Manager allows configuration of DVR's setup from a remote site. The configuration file can be saved to the PC and also can be applied to other devices.

7.1 Access DVR Setup Manager

1. Press  button, then select [DVR Setup]
2. The Setup Manager will then appear. The DVR's setup can be configured via manager.
3. Press [Send] after completing configuration changes to apply all modifications to the DVR.



7.2 Save and Load Configuration File

1. Select [Open] in file menu
2. Select a saved configuration file
3. Modify any values as desired, then save the file with [Save] or [Save As]
4. Press [Send] to apply the modified values to the DVR

7.3 Configuration Initialization / Factory Reset

1. Select [Setup Data Reset] from the file menu.
2. All values will be initialized in the configuration file.
3. Select [DVR All Reset] from the file menu to initialize a factory reset for the DVR.
4. Press [Send] to apply the modification to the DVR.

*Note: "DVR All Reset" will reset *all* configurations on the DVR including its IP address.