

Cascadia

Creating Remote Possibilities™



S-Series PDA Client Software OPERATION MANUAL

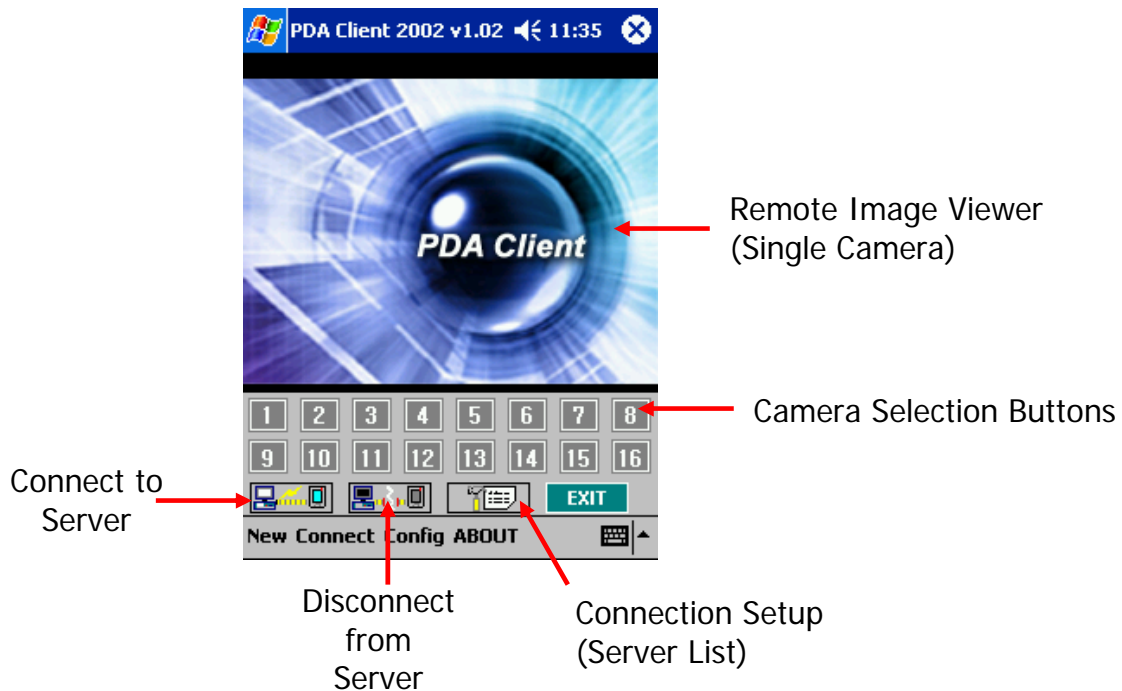
Copyright © 2005 Cascadia Video Products, LLC

All rights reserved

Reproduction, adaptation, or translation without prior written permission is prohibited, except as allowed under copyright laws

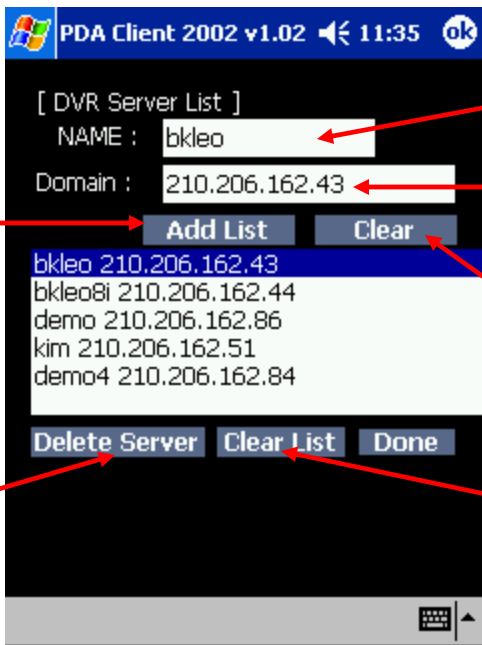
PDA Client Operation

- 1) Left click the "Start Menu" to open the Start Menu.
- 2) Left click "PDA Client" to open the PDA Client Program.



PDA Client Operation (cont.)

Connection Setup (Server List)



Enter Server Name

Enter IP Address

Left click "Add List" after entering the Name and IP Address

Left click "Clear" to clear the entry

Select the server from the list and left click "Delete Server" to delete the server from the list

Left click "Clear List" to clear all the servers from the list

Connecting to the Server



Highlight the server and left click "Connect to Server" to connect to the selected server

Select the camera to view using the Camera Selection Buttons

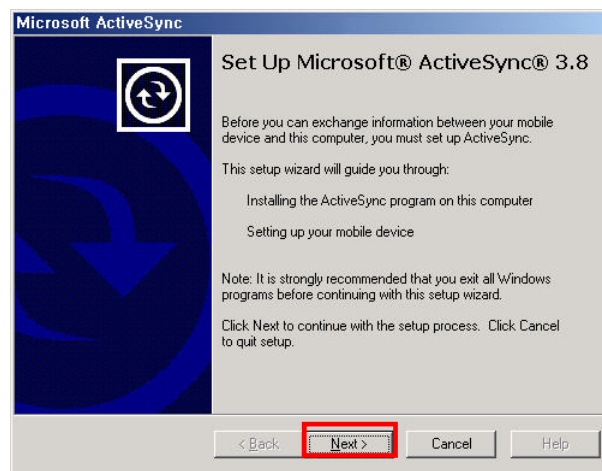
Active Sync and PDA Client Installation

Recommended Environment

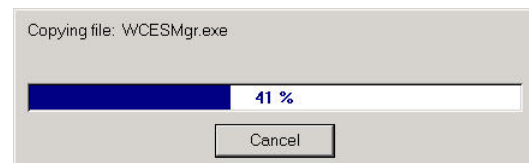
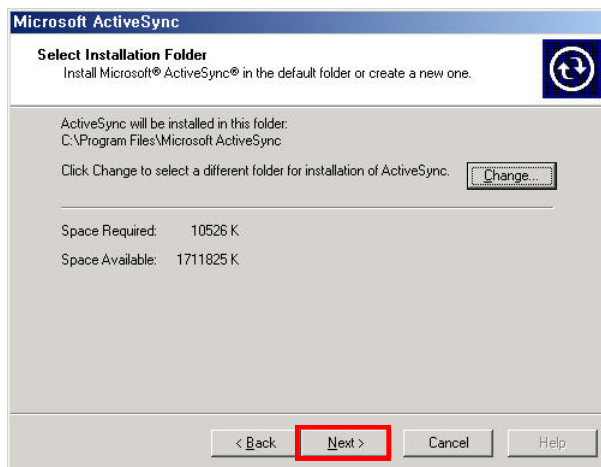
- PDA Operating System: Microsoft Windows CE Pocket PC 2002 or 2003
- Internet should be accessible from the PDA

Installation

- 1) Download Microsoft ActiveSync Setup program from Microsoft Download Site.
- 2) Run the ActiveSync Setup program to display the window below. Left click "Next".

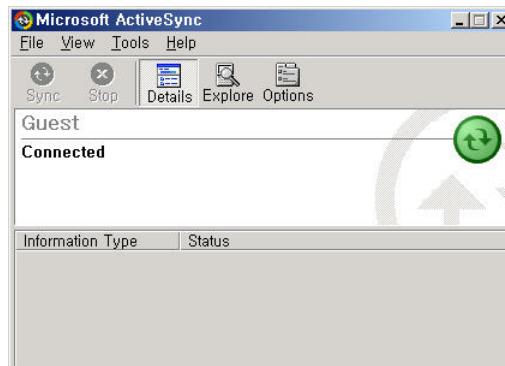


- 3) Select the Installation folder and left click "Next" to copy and install the program.

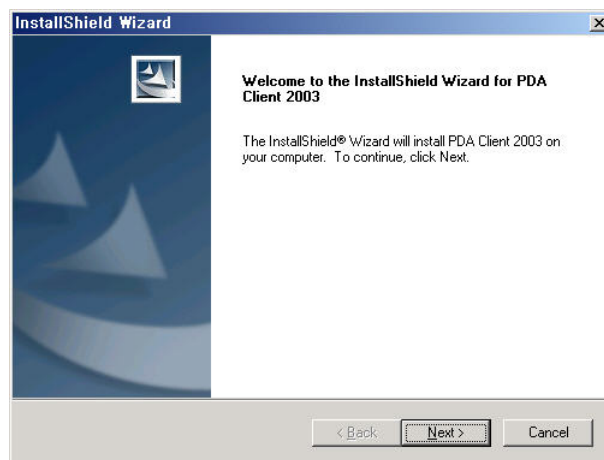


Active Sync and PDA Client Installation (cont.)

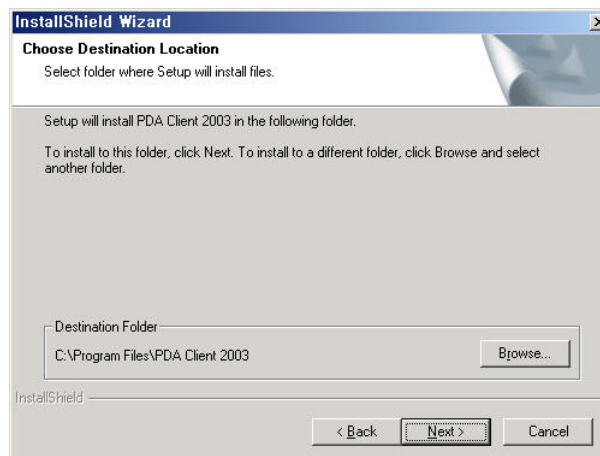
4) Connect the PDA to the PC and open the ActiveSync program.



5) Verify the Operating System before installing the PDA Client Program. Select the file for Pocket PC 2002 or Pocket PC 2003, open the program and left click "Next" to begin the installation.

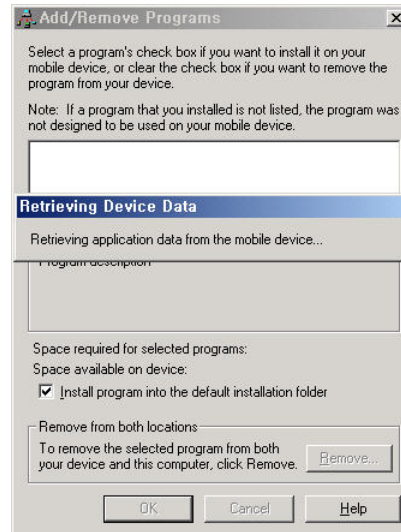


6) Select the Destination Folder and left click "Next" to copy and install the program.

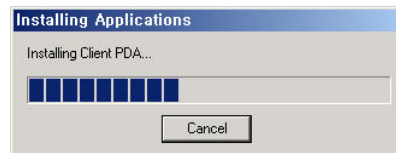
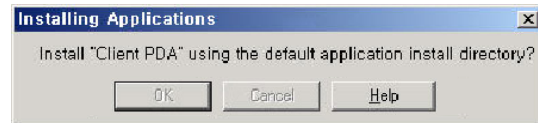


Active Sync and PDA Client Installation (cont.)

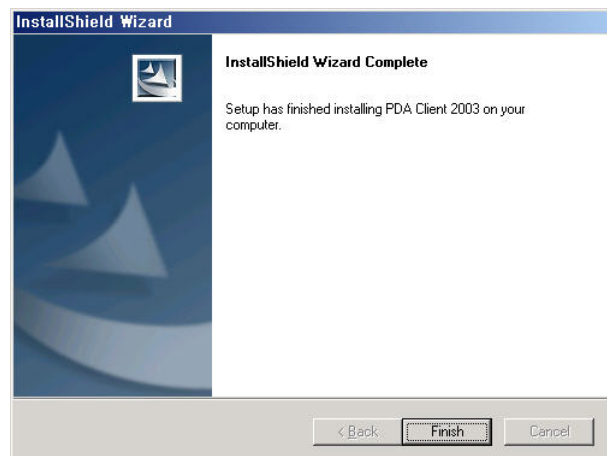
7) The PC will retrieve the application data from the PDA.



8) Left click "OK" to install the PDA Client into the PDA Device.



9) Left click "Finish" to complete and close the installation wizard.



PDA Client Setup from the DVRT

The DVRT must be setup on the Network Setup Tab to enable both Web Access and a PDA Connection. Check the box for a Web Connection and the box for the PDA Connection.

